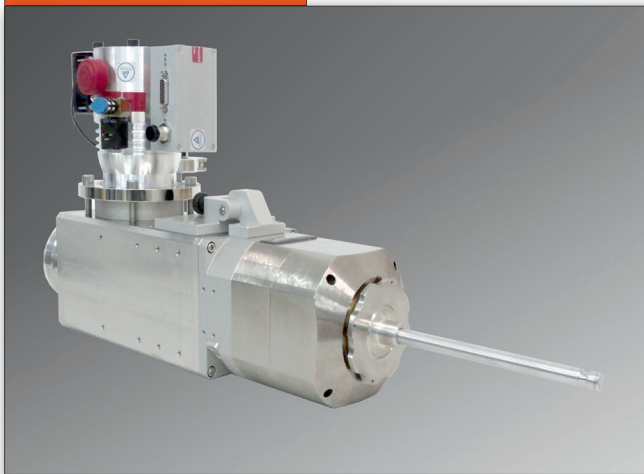


MICROFOCUS X-RAY TUBES

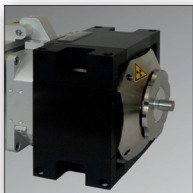
PRODUCT LINE RA



Product image



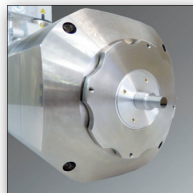
Microfocus X-ray tube XWT-160-RA



XWT-160-RA with High Energy P4 target and cooling of tube head



Rod anodes with different lengths and P3 target

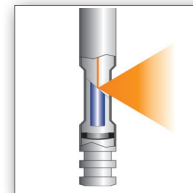


XWT-160-RA with 8 mm rod anode and High Energy P4 target

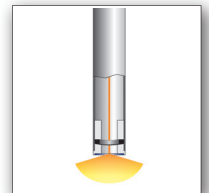
Images show options

Technical data

Data	Product line RA			
Max. voltage (kV)	160	190	225	240
Min. voltage (kV)	20	20	20	20
Max. current (mA)	1.0	1.0	1.0	1.0
Min. current (mA)	0.05	0.05	0.05	0.05
Max. power, emission (Watt)	20	20	20	20
Tube type	Rod anode			
Target types	Reflection / Transmission			
Rod anode length (mm)	10 - 250			
Rod anode diameter (mm)	8 - 20			
Tube weight (approx. kg)	30	30	51	51



Reflection target (P3)



Transmission target (P4)

Highlights

- ▶ Easy exchange of rod anodes with standard transmission targets
- ▶ Special solution for semiconductor industry with **High Energy** transmission rod anode available
- ▶ Automatic calibration for optimum performance
- ▶ Different target types for high flexibility
- ▶ Easy maintenance with adjusted ready-to-use click-in cathodes and automatic tube venting
- ▶ Unlimited lifetime

See our new catalogue **Options and Accessories** to find additional auxiliary equipment for your X-RAY WorX tube.

Scope of delivery

- ▶ Open microfocus X-ray tube with rod anode, turbo vacuum pump, vacuum gauge, and electronic drive unit
- ▶ High voltage generator and high voltage cable
- ▶ Prevacuum pump with vacuum hose
- ▶ Tube controller, power supplies, and safety relays on 19" mounting panels
- ▶ Set of cables for electrical connection of X-ray tube and components
- ▶ Spare parts case, documentation, and operating software

Product Line RA

Focal spot size

		Voltage [kV]					
		60	100	150	160	190	225
Emission power [W]	5	85	57	53	52	51	51
	10	75	55	55	54	54	54
	20	86	63	57	56	55	55

Focal spot sizes in microns (μm) of XWT-225-RA
(length of rod anode 150 mm, diameter 12 mm, P3 reflection target)

Focal spot size

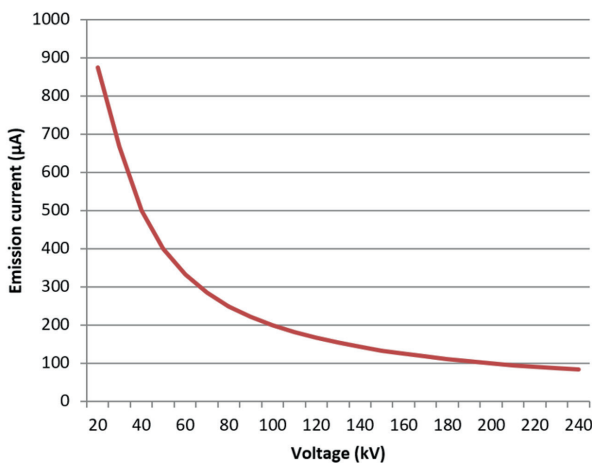
		Voltage [kV]					
		60	100	150	160	190	225
Emission power [W]	5	103	84	79	77	72	68
	10	102	81	80	79	77	72
	20	125	86	82	81	78	72

Focal spot sizes in microns (μm) of XWT-225-RA
(length of rod anode 250 mm, diameter 12 mm, P3 reflection target)

Remarks

- ▶ Measurement of focal spot sizes according to EN12543-5 with 90° viewing angle relative to rod anode
- ▶ Focal spot sizes lower than 100 microns allow weld inspection using digital detectors in compliance with EN ISO 17636-2. This is especially important for single wall penetration of tubes with outer diameter of more than 100 mm or wall thickness of more than 8 mm.

Power rating chart



Smart facts

- ▶ The variant XWT-160-RA-30-15-P4HE has a rod anode with a diameter of 15 mm and a length of 30 mm.
- ▶ It resolves the 4 micron pattern of the JIMA test chart at 45 kV and 2 Watt target power.
- ▶ At a source to detector distance of 600 mm a magnification of more than 2000 may be achieved.
- ▶ Generally resolution depends on length of the rod anode and power in use.

Tube dimensions

